

THE OPTIMIST CLASSES

IIT-JAM TOPPERS

8
AIR



MANOJ KUMAR SINGH

9
AIR



ABHAY

12
AIR



PAWAN

15
AIR



SATYAM

21
AIR



SOUMIL GIRISH SAHU

29
AIR



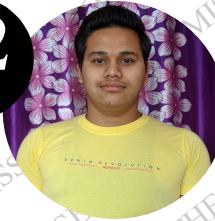
BHOOMIJA

31
AIR



AKSHIT AGGARWAL

32
AIR



SHIKHAR CHAMOLI

33
AIR



RAVI SINGH ADHIKARI

44
AIR



GAURAV JHA

56
AIR



SWAPNIL JOSHI

65
AIR



LOKESH BHATT

75
AIR



GOPESH VISHVAKARMA

77
AIR



VAIBHAV

80
AIR



SHASWAT CHAMOLI

CSIR-NET-JRF RESULTS 2022



ANNU
DL01000308



ALANKAR
UP15000162



SAHIL RANA
HR09000108



JAYESTHI
RJ11000161



DASRATH
RJ06000682



VIVEK
UK01000439



UZAIR AHMED
UP02000246



SURYA PRATAP SINGH
RJ06000232



HIMANSHU
UP10000095



CHANDAN
RJ09000159



SAIKHOM JOHNSON
MN01000196



AJAY SAINI
RJ06001744



VIKAS YADAV
RJ06001102



JYOTSNA KOHLI
UK02000262



SHYAM SUNDAR
RJ06000615

THE OPTIMIST CLASSES

AN INSTITUTE FOR NET-JRF/GATE/IIT-JAM/JEST/TIFR/M.Sc ENTRANCE EXAMS

CONTACT: 9871044043

GATE PAPER 2023

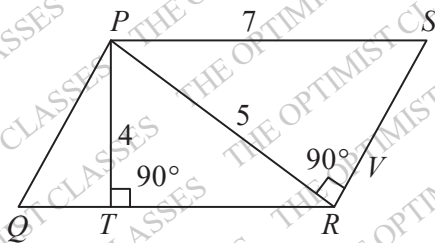
1. “You are delaying the completion of the task. Send _____ contributions at the earliest”.

(a) you are (b) your
(c) you're (d) yore

2. References: _____ :: Guidelines : Implement
(By word meaning)

(a) Sight (b) Site
(c) Cite (d) Plagiarise

3. In the given figure. PQRS is a parallelogram with $PS = 7\text{cm}$, $PT = 4\text{cm}$ and $PV = 5\text{cm}$. What is the length of RS in cm ? (The diagram is representative).



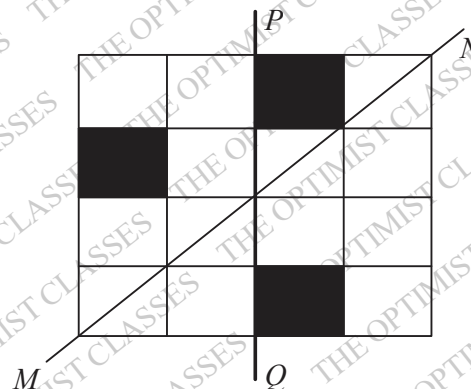
(a) $\frac{20}{7}$ (b) $\frac{28}{5}$
(c) $\frac{9}{2}$ (d) $\frac{35}{4}$

4. In 2022, June Huh was awarded the Fields medal, which is the highest prize in Mathematics. When he was younger, he was also a poet. He did not win any medals in the International Mathematics Olympiads. He dropped out of college. Based only on the about information, which one of the following statements can be logically inferred with certainty?
- (a) Every fields medalist has won a medal in an

International Mathematics Olympiad

(b) Everyone who has dropped out of college has won the fields medal
(c) All fields medalists are part-time poets
(d) Some fields medalists has dropped out of college

5. A line of symmetry is defined as a line that divides a figure into two parts in a way such that each part is a mirror image of the other part about that line. The given figure consists of 16 unit squares arranged as shown. In addition to the three black squares, what is the minimum number of squares that must be coloured black, such that both PQ and MN form lines of symmetry? (The figure is representative)



(a) 3 (b) 4
(c) 5 (d) 6

6. Human beings are one among many creatures that inhabit an imagined world. In this imagined world, some creatures are cruel. If in this imagined world, it is given that the statement “Some human beings are not cruel creatures” is FALSE, then which of

the following set of statement(s) can be logically inferred with certainty?

- (i) All human beings are cruel creatures
 (ii) Some human beings are cruel creatures
 (iii) Some creatures that are cruel are human beings
 (iv) No human beings are cruel creatures
- (a) only (i) (b) only (iii) and (iv)
 (c) only (i) and (ii) (d) (i), (ii) and (iii)

7. To construct a wall, sand and cement are mixed in the ratio of 3 : 1. The cost of sand and that of cement are in the ratio of 1 : 2.

If the total cost of sand and cement to construct the wall is 1000 rupees, then what is the cost (in rupees) of cement used?

- (a) 400 (b) 600
 (c) 800 (d) 200

8. The World Bank has declared that it does not plan to offer new financing to Sri Lanka, which is battling its worst economic crisis in decades, until the country has an adequate macroeconomic policy framework in place. In a statement, the World Bank said Sri Lanka needed to adopt structural reforms that focus on economic stabilisation and tackle the root causes of its crisis. The latter has starved it of foreign exchange and led to shortages of food, fuel, and medicines. The bank is repurposing resources under existing loans to help alleviate shortages of essential items such as medicine, cooking gas, fertiliser, meals for children, and cash for vulnerable households.

Based only on the above passage, which one of the following statements can be inferred with certainty?

- (a) According to the World Bank, the root cause of Sri Lanka's economic crisis is that it does not have enough foreign exchange
 (b) The World Bank has stated that it will advise the Sri Lankan government about how to tackle the root causes of its economic crisis
 (c) According to the World Bank, Sri Lanka does not yet have an adequate macroeconomic policy framework
 (d) The World Bank has stated that it will provide Sri Lanka with additional funds for essentials such as food, fuel, and medicines.

9. The coefficient of x^4 in the polynomial

$(x-1)^3(x-2)^3$ is equal to _____

- (a) 33 (b) -3
 (c) 30 (d) 21

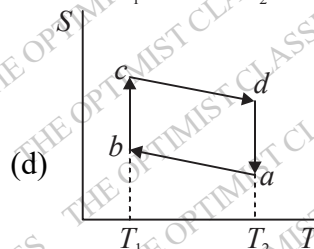
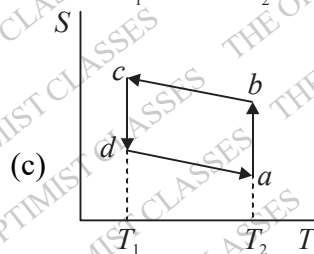
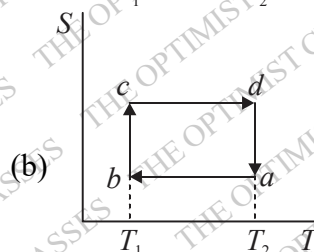
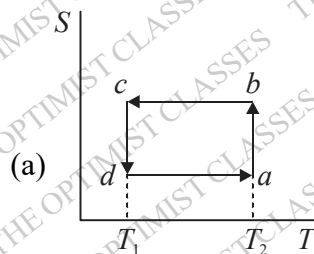
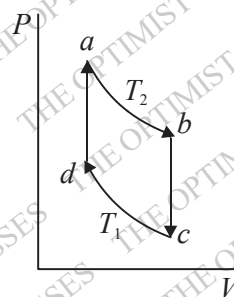
10.

Which one of the following shapes can be used to tile (completely cover by repeating) a flat plane, extending to infinity in all directions, without leaving any empty spaces in between them? The copies of the shape used to tile are identical and are not allowed to overlap.

- (a) circle (b) regular octagon
 (c) regular pentagon (d) rhombus

11.

Which of the following entropy (S)- temperature (T) diagrams CORRECTLY represents the Carnot cycle $abcd$ shown in the P - V diagram?



12.

Which one of the following is a dimensionless con-

stant?

- (a) Permittivity of free space
- (b) Permeability of free space
- (c) Bohr magneton
- (d) Fine structure constant

13. Choose the most appropriate matching of the items in **Column 1** with those in **Column 2**.

Column 1	Column 2
(i) PIN diode	P. Voltage regulation
(ii) Tunnel diode	Q. Radio frequency and microwave devices
(iii) Zener diode	R. Optoelectronic detection
(iv) Photo diode	S. Oscillator

- (a) (i) - Q, (ii) - S, (iii) - P, (iv) - R
- (b) (i) - R, (ii) - Q, (iii) - P, (iv) - S
- (c) (i) - R, (ii) - S, (iii) - P, (iv) - Q
- (d) (i) - P, (ii) - Q, (iii) - R, (iv) - S

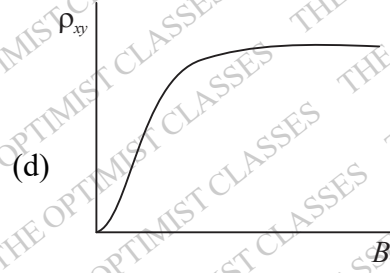
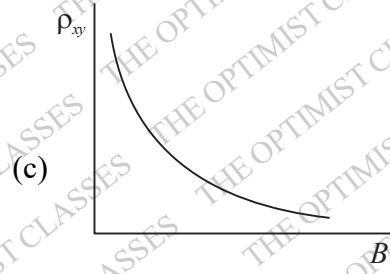
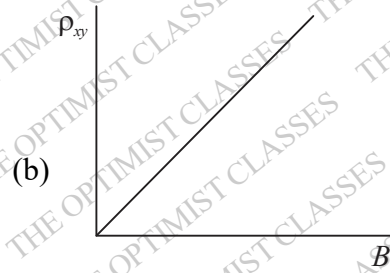
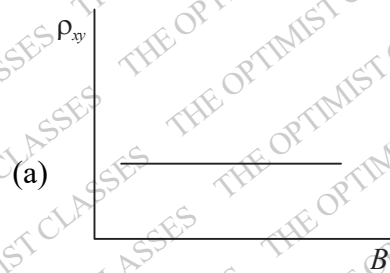
14. The atomic number of an atom is 6. What is the spectroscopic notation of its ground state, according to Hund's rules?

- (a) 3P_0
- (b) 3P_1
- (c) 3D_3
- (d) 3S_1

15. H is the Hamiltonian, \vec{L} the orbital angular momentum and L_z is the z -component of \vec{L} . The $1s$ state of the hydrogen atom in the non-relativistic formalism is an eigen function of which one of the following sets of operators?

- (a) H, L^2 and L_z
- (b) H, \vec{L}, L^2 and L_z
- (c) L^2 and L_z only
- (d) H and L_z only

16. The Hall experiment is carried out with a non-magnetic semiconductor. The current I is along the x -axis and the magnetic field B is along the z -axis. Which one of the following is the CORRECT representation of the variation of the magnitude of the Hall resistivity ρ_{xy} as a function of the magnetic field?



17. Consider a two dimensional Cartesian coordinate system in which a rank 2 contravariant tensor is

represented by the matrix $\begin{pmatrix} 0 & 1 \\ 1 & 0 \end{pmatrix}$. The coordinate system is rotated anticlockwise by an acute angle θ with the origin fixed. Which one of the following matrices represents the tensor in the new coordinate system?

(a) $\begin{pmatrix} 0 & \cos 2\theta \\ -\sin 2\theta & 0 \end{pmatrix}$

(b) $\begin{pmatrix} \sin 2\theta & \cos 2\theta \\ \cos 2\theta & -\sin 2\theta \end{pmatrix}$

(c) $\begin{pmatrix} \sin 2\theta & -\cos 2\theta \\ \cos 2\theta & \sin 2\theta \end{pmatrix}$

$$(d) \begin{pmatrix} \sin 2\theta & 0 \\ 0 & -\cos 2\theta \end{pmatrix}$$

18. A compound consists of three ions X , Y and Z . The Z ions are arranged in an FCC arrangement.

The X ions occupy $\frac{1}{6}$ of the tetrahedral voids and

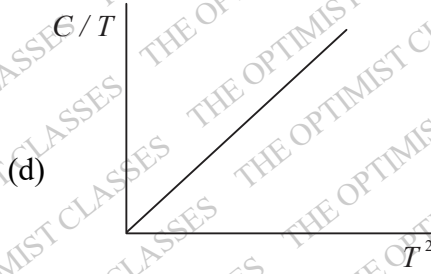
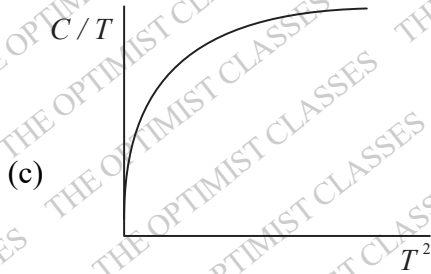
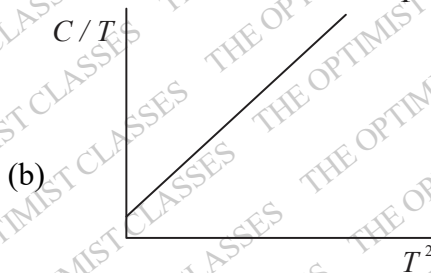
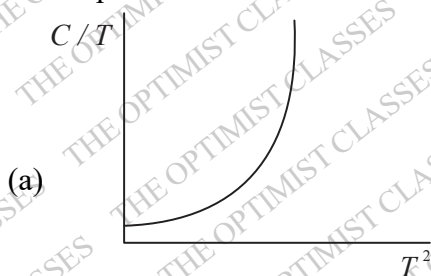
the Y ions occupy $\frac{1}{3}$ of the octahedral voids. Which

one of the following is the CORRECT chemical formula of the compound?

- (a) XY_2Z_4 (b) XYZ_3
(c) XYZ_2 (d) XYZ_4

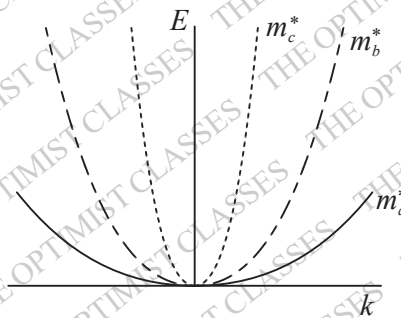
19. For a non-magnetic metal, which one of the following graphs best represents the behaviour of

$\frac{C}{T}$ vs. T^2 , where C is the heat capacity and T is the temperature?



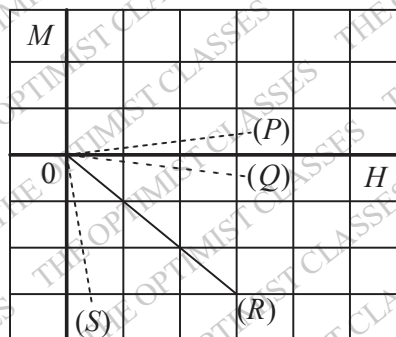
20. For nonrelativistic electrons in a solid, different

energy dispersion relations (with effective masses m_a^* , m_b^* , and m_c^*) are schematically shown in the plots. Which one of the following options is CORRECT?



- (a) $m_a^* = m_b^* = m_c^*$ (b) $m_b^* > m_c^* > m_a^*$
(c) $m_c^* > m_b^* > m_a^*$ (d) $m_a^* > m_b^* > m_c^*$

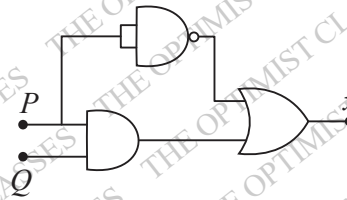
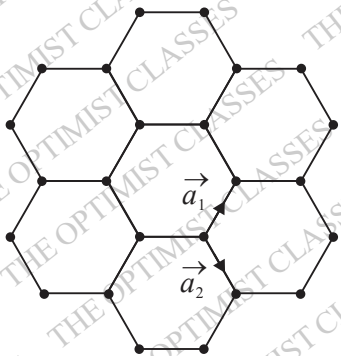
21. The figure schematically shown the M (magnetization) - H (magnetic field) plots for certain types of materials. Here M and H are plotted in the same scale and units. Which one of the following is the most appropriate combination?



- (a) (Q) - Paramagnet, (R) - Type-I Superconductor, (S) - Antiferromagnet
(b) (P) - Paramagnet, (Q) - Diamagnet, (R) - Type-I Superconductor
(c) (P) - Paramagnet, (Q) - Antiferromagnet, (R) - Type-I Superconductor
(d) (P) - Diamagnet, (R) - Paramagnet, (S) - Type-I Superconductor

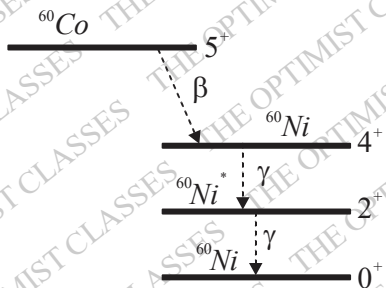
22. Graphene is a two dimensional material, in which carbon atoms are arranged in a honeycomb lattice with lattice constant a . As shown in the figure, \vec{a}_1 and \vec{a}_2 are two lattice vectors. Which one of the following is the area of the first Brillouin zone

for this lattice?



- (a) $\frac{8\pi^2}{3\sqrt{3}a^2}$
- (b) $\frac{4\pi^2}{3\sqrt{3}a^2}$
- (c) $\frac{8\pi^2}{\sqrt{3}a^2}$
- (d) $\frac{4\pi^2}{\sqrt{3}a^2}$

23. A ^{60}Co nucleus emits a β -particle and is converted to $^{60}\text{Ni}^*$ with $J^P = 4^+$, which in turn decays to the ^{60}Ni ground state with $J^P = 0^+$ by emitting two photons in succession, as shown in the figure. Which one of the following statements is CORRECT?



- (a) $4^+ \rightarrow 2^+$ is an electric octupole transition
- (b) $4^+ \rightarrow 2^+$ is a magnetic quadrupole transition
- (c) $2^+ \rightarrow 0^+$ is an electric quadrupole transition
- (d) $2^+ \rightarrow 0^+$ is a magnetic quadrupole transition

24. Which one of the following options is CORRECT for the given logic circuit?

- (a) $P = 1, Q = 1, X = 0$
- (b) $P = 1, Q = 0, X = 1$
- (c) $P = 0, Q = 1, X = 0$
- (d) $P = 0, Q = 0, X = 1$

25. An atom with non-zero magnetic moment has an angular momentum of magnitude $\sqrt{12}\hbar$. When a beam of such atoms is passed through a Stern-Gerlach apparatus, how many beams does it split into?

- (a) 3
- (b) 7
- (c) 9
- (d) 25

26. A 4×4 matrix M has the property $M^\dagger = -M$ and $M^4 = I$, where I is the 4×4 identity matrix. Which one of the following is the CORRECT set of eigenvalues of the matrix M?

- (a) (1, 1, -1, -1)
- (b) (i, i, -i, -i)
- (c) (i, i, i, -i)
- (d) (1, 1, -i, -i)

27. The Ξ^{0*} particle is a member of the Baryon

decuplet with isospin state $|I, I_3\rangle = \left| \frac{1}{2}, \frac{1}{2} \right\rangle$ and strangeness quantum number -2. In the quark model, which one of the following is the flavour part of the Ξ^{0*} wavefunction?

- (a) $\frac{1}{\sqrt{2}}(uss - ssu)$
- (b) $\frac{1}{\sqrt{3}}(uss + sus + ssu)$
- (c) $\frac{1}{\sqrt{2}}(uss + ssu)$
- (d) $\frac{1}{\sqrt{3}}(uss - sus + ssu)$

28. Which of the following is(are) the CORRECT option(s) for the Joule-Thomson effect?

- (a) It is an isentropic process
- (b) It is an isenthalpic process
- (c) It can result in cooling as well as heating
- (d) For an ideal gas it always results in cooling

29. The deuteron is a bound state of a neutron and a proton. Which of the following statements is(are) CORRECT?

- (a) The deuteron has a finite value of electric qua-

drupole moment due to non-spherical electronic charge distribution

(b) The magnetic moment of the deuteron is equal to the sum of the magnetic moments of the neutron and the proton

(c) The deuteron state is an admixture of 3S_1 and 3D_1 states

(d) The deuteron state is an admixture of 3S_1 and 3P_1 states

30. The Geiger-Muller counter is a device to detect α , β and γ radiations. It is a cylindrical tube filled with monatomic gases like argon, and polyatomic gases such as ethyl alcohol. The inner electrode is along the axis of the cylindrical tube and the outer electrode is the tube. Which of the following statements is(are) CORRECT?

(a) Argon is used so that ambient light coming from the surroundings do not produce any signal in the detector

(b) Ethyl alcohol is used as a quenching gas

(c) The electric field strength decreases from the axis to the edge of the tube and the direction of the field is radially outward

(d) The electric field increases from the axis to the edge of the tube and the field direction is radially inward

31. Consider an isolated magnetized sphere of radius R with a uniform magnetization \vec{M} along the positive z -direction, with the north poles of the sphere lying on the z -axis. It is given that the magnetic

field inside the sphere is $\vec{B} = \frac{2\mu_0}{3}\vec{M}$, where μ_0

is the permeability of vacuum. Which of the following statements is(are) CORRECT?

(a) The bound volume current density is zero

(b) The bound surface current density has maximum magnitude at the equator, where this magnitude equals $|\vec{M}|$

(c) The auxiliary field $\vec{H} = -\frac{2}{3}\vec{M}$

(d) Far from the sphere, the magnetic field is due

to a dipole of moment \vec{m} , where $\frac{\vec{m}}{4\pi R^3} = \frac{B}{2\mu_0}\hat{z}$

32. Which of the following options represent(s) linearly independent pair(s) of functions of a real variable x ?

(a) e^{ix} and e^{-ix}

(b) x and e^x

(c) 2^x and 2^{-3+x}

(d) e^{ix} and $\sin x$

33. In the vector model of angular momentum applied to atoms, what is the minimum angle in degrees (in integer) made by the orbital angular momentum vector and the positive z -axis for a $2p$ electron?

34. For a transistor amplifier, the frequency response is such that the mid band voltage gain is 200. The cutoff frequencies are 20Hz and 20kHz . What is the ratio (rounded off to two decimal places) of the voltage gain at 10Hz to that at 100kHz ?

35. An electric field as a function of radial coordinate

r has the form $\vec{E} = \alpha \frac{e^{-r^2}}{r} \hat{r}$, where α is a constant. Assume that dimensions are appropriately

taken care of the electric flux through a sphere of radius $\sqrt{2}$, centered at the origin, is ϕ , what is

the value of $\frac{\phi}{2\pi\alpha}$ (rounded off to two decimal places)?

36. It is given that the electric ground state of a diatomic molecule X_2 has even parity and the nuclear spin of X is 0. Which one of the following is the CORRECT statement with regard to the rotational Raman spectrum (J is the rotational quantum number) of this molecule?

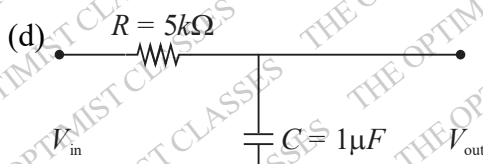
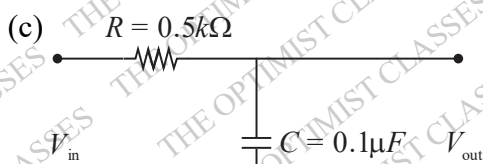
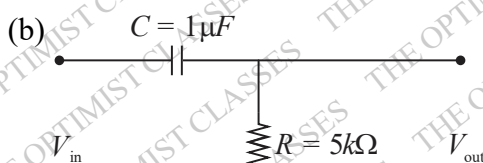
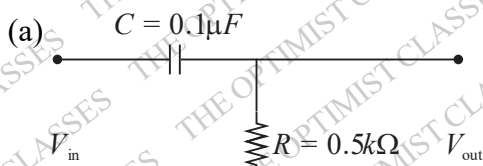
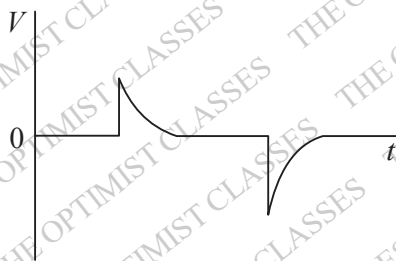
(a) Lines of all J values are present

(b) Lines have alternating intensity in the ratio of 3:1

(c) Lines of only even J values are present

(d) Lines of only odd J values are present

37. An input voltage in the form of a square wave of frequency 1kHz is given to a circuit, which results in the output shown schematically below. Which one of the following options is the CORRECT representation of the circuit?



38. A simple harmonic oscillator with an angular frequency ω is in thermal equilibrium with a reservoir at absolute temperature T , with $\omega = \frac{2k_B T}{\hbar}$. Which one of the following is the partition function of the system?

(a) $\frac{e}{e^2 - 1}$

(b) $\frac{e}{e^2 + 1}$

(c) $\frac{e}{e - 1}$

(d) $\frac{e}{e + 1}$

39. Which one of the following options is the most appropriate match between the items given in **Column 1** and **Column 2**?

Column 1	Column 2
(i) Visible light	P. Transition between core energy levels of atoms
(ii) X-rays	Q. Transition between nuclear energy levels
(iii) Gamma rays	R. Pair production
(iv) Thermal neutrons	S. Crystal structure determination
	T. Photoelectric effect

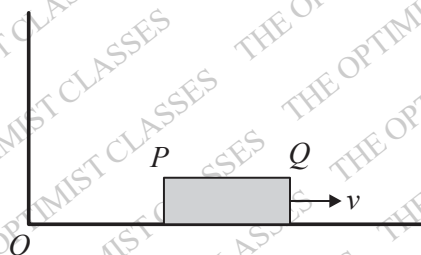
- (a) (i) - T, (ii) - P,S,T, (iii) - Q,R, (iv) - S
 (b) (i) - P,T, (ii) - S, (iii) - R,S, (iv) - S,T
 (c) (i) - T, (ii) - R,S, (iii) - Q,R, (iv) - S
 (d) (i) - S,T, (ii) - P,S, (iii) - R,T, (iv) - S

40. A rod PQ of proper length L lies along the x -axis and moves towards the positive x -direction with

speed $v = \frac{3c}{5}$ with respect to the ground (see figure), where c is the speed of light in vacuum. An

observer on the ground measures the positions of P and Q at different times t_p and t_q respectively in the ground frame, and finds the difference between

them to be $\frac{9L}{10}$. What is the value of $t_q - t_p$?



(a) $\frac{L}{3c}$

(b) $\frac{L}{5c}$

(c) $\frac{L}{6c}$

(d) $\frac{2L}{3c}$

41. A symmetric top has principal moments of inertia

$$I_1 = I_2 = \frac{2\alpha}{3}, I_3 = 2\alpha$$
 about a set of principal

axes 1, 2, 3 respectively, passing through its centre of mass, where α is a positive constant. There is no force acting on the body and the angular speed

of the body about the 3-axis is $\omega_3 = \frac{1}{8} \text{ rad/s}$.

Which what angular frequency in rad/s does the angular velocity vector $\vec{\omega}_1$ precess about the 3-axis?

- (a) 2 (b) 3
(c) 5 (d) 7

42. A particle of mass
- m
- is free to move on a frictionless horizontal two dimensional
- (r, θ)
- plane and

is acted upon by a force $\vec{F} = -\frac{k}{2r^3} \hat{r}$ with k being a positive constant. If p_r and p_θ are the

generalised momenta corresponding to r and θ

respectively, then what is the value of $\frac{dp_r}{dt}$?

(a) $\frac{p_\theta^2 - 2mk}{2mr^3}$

(b) $\frac{2p_\theta^2 - 2mk}{mr^3}$

(c) $\frac{p_\theta^2 - 2mk}{mr^3}$

(d) $\frac{2p_\theta^2 - mk}{2mr^3}$

43. Consider two real functions

$$U(x, y) = xy(x^2 - y^2),$$

$$V(x, y) = ax^4 + by^4 + cx^2y^2 + k,$$

where k is a real constant and a, b, c are real coefficients. If $U(x, y) + iV(x, y)$ is analytic, then what is the value of $a \times b \times c$?

(a) $\frac{1}{8}$

(b) $\frac{3}{28}$

(c) $\frac{5}{36}$

(d) $\frac{3}{32}$

44. Young's double slit experiment is performed using a beam of C_{60} (fullerene) molecules, each molecule being made up of 60 carbon atoms. When the slit separation is 50 nm , fringes are formed on a screen kept at a distance of 1 m from the slits. Now, the experiment is repeated with C_{70} molecules with a slit separation of 92.5 nm . The kinetic energies of both the beams are the same. The position of the 4th bright fringe for C_{60} will correspond to the n th bright fringe for C_{70} . What is the value of n (rounded off to the nearest integer)?

- (a) 5 (b) 6
(c) 7 (d) 8

- 45.

A neutron beam with a wave vector \vec{k} and an energy 20.4 meV diffracts from a crystal with an outgoing wave vector \vec{k}' . One of the diffraction peaks is observed for the reciprocal lattice vector \vec{G} of magnitude 3.14 \AA^{-1} . What is the diffraction angle in degrees (rounded off to the nearest integer) that \vec{k} makes with the plane?

- (a) 15 (b) 30
(c) 45 (d) 60

- 46.

In the first Brillouin zone of a rectangular lattice (lattice constants $a = 6 \text{ \AA}$ and $b = 4 \text{ \AA}$), three incoming phonons with the same wave vector $\langle 1.2 \text{ \AA}^{-1}, 0.6 \text{ \AA}^{-1} \rangle$ interact to give one phonon. Which one of the following is the CORRECT wave vector of the resulting phonon?

(a) $\langle 2.56 \text{ \AA}^{-1}, 0.23 \text{ \AA}^{-1} \rangle$

(b) $\langle 3.60 \text{ \AA}^{-1}, 1.80 \text{ \AA}^{-1} \rangle$

(c) $\langle 0.48 \text{ \AA}^{-1}, 0.23 \text{ \AA}^{-1} \rangle$

(d) $\langle 3.60 \text{ \AA}^{-1}, 0.80 \text{ \AA}^{-1} \rangle$

- 47.

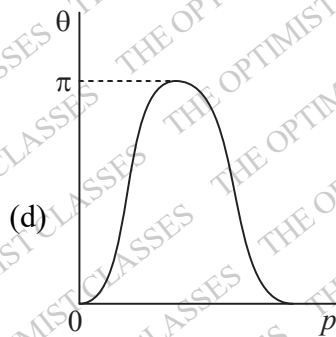
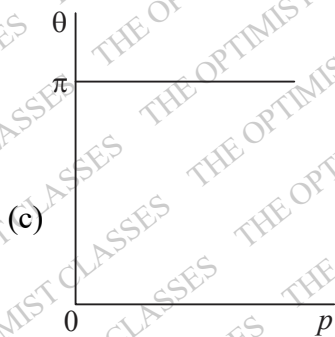
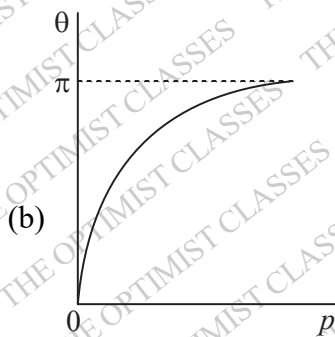
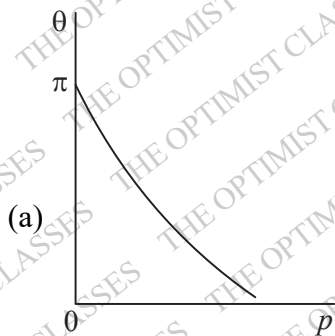
For a covalently bonded solid consisting of ions of mass m , the binding potential can be assumed to be given by

$$U(r) = -\epsilon \left(\frac{r}{r_0} \right) e^{-\frac{r}{r_0}},$$

where ϵ and r_0 are positive constants. What is the Einstein frequency of the solid in Hz?

- (a) $\frac{1}{2\pi} \sqrt{\frac{\epsilon\epsilon}{mr_0^2}}$ (b) $\frac{1}{2\pi} \sqrt{\frac{\epsilon}{mer_0^2}}$
 (c) $\frac{1}{2\pi} \sqrt{\frac{2\epsilon}{mer_0^2}}$ (d) $\frac{1}{2\pi} \sqrt{\frac{\epsilon\epsilon}{2mr_0^2}}$

48. In a hadronic interaction, π^0 's are produced with different momenta, and they immediately decay into two photons with an opening angle θ between them. Assuming that all these decays occur in one plane, which one of the following figures depicts the behaviour of θ as a function of the π^0 momentum p ?



49. A particle has wavefunction $\psi(x, y, z) = Nze^{-\alpha(x^2+y^2+z^2)}$, where N is a normalization constant and α is a positive constant. In this state, which one of the following options represents the eigenvalues of L^2 and L_z respectively?

Some values of Y_l^m are:

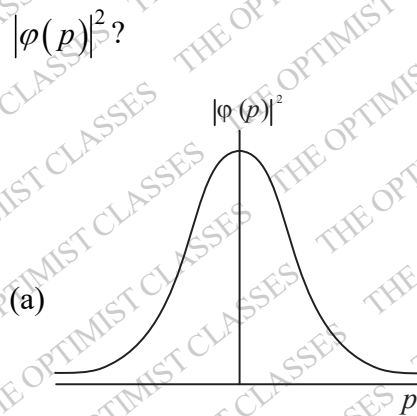
$$Y_0^0 = \sqrt{\frac{1}{4\pi}}, Y_1^0 = \sqrt{\frac{3}{4\pi}} \cos\theta, Y_1^{\pm 1} = \mp \sqrt{\frac{3}{8\pi}} \sin\theta e^{\pm i\phi}$$

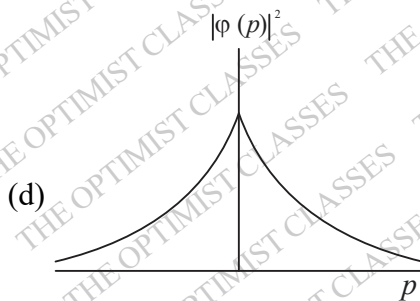
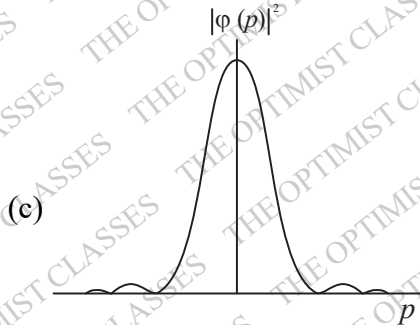
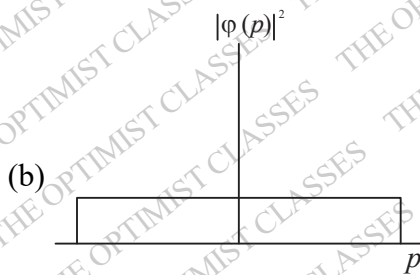
- (a) 0 and 0 (b) \hbar^2 and $-\hbar$
 (c) $2\hbar^2$ and 0 (d) \hbar^2 and \hbar

50. The wavefunction of a particle in one dimension is given by

$$\psi(x) = \begin{cases} M, & -a < x' \leq a \\ 0, & \text{otherwise} \end{cases}$$

Here M and a are positive constants. If $\varphi(p)$ is the corresponding momentum space wavefunction, which one of the following plots best represents $|\varphi(p)|^2$?





51. Consider a particle in a two dimensional infinite square well potential of side L , with $0 \leq x \leq L$ and $0 \leq y \leq L$. The wavefunction of the particle is zero only along the line $y = \frac{L}{2}$, apart from the boundaries of the well. If the energy of the particle in this state is E , what is the energy of the ground state?

- (a) $\frac{1}{4}E$ (b) $\frac{2}{5}E$
 (c) $\frac{3}{8}E$ (d) $\frac{1}{2}E$

52. Consider two non-identical spin $\frac{1}{2}$ particles labelled 1 and 2 in the spin product state

$$\left| \frac{1}{2}, \frac{1}{2} \right\rangle \left| \frac{1}{2}, -\frac{1}{2} \right\rangle.$$

The Hamiltonian of the system

$$\text{is } H = \frac{4\lambda}{\hbar^2} \vec{S}_1 \cdot \vec{S}_2,$$

where \vec{S}_1 and \vec{S}_2 are the spin operators of particles 1 and 2, respectively, and λ is a constant with appropriate dimensions. What is the expectation value of H in the above state?

- (a) $-\lambda$ (b) -2λ
 (c) λ (d) 2λ

53. A spin $\frac{1}{2}$ particle is in a spin up along the x-axis (with unit vector \hat{x}) and is denoted as $\left| \frac{1}{2}, \frac{1}{2} \right\rangle_x$.

What is the probability of finding the particle to be in a spin up state along the direction \hat{x}' , which lies in the xy -plane and makes an angle θ with respect to the positive x -axis, if such a measurement is made?

- (a) $\frac{1}{2} \cos^2 \frac{\theta}{4}$ (b) $\cos^2 \frac{\theta}{4}$
 (c) $\frac{1}{4} \cos^2 \frac{\theta}{2}$ (d) $\cos^2 \frac{\theta}{2}$

54. Different spectral lines of the Balmer series (transitions $n \rightarrow 2$, with n being the principal quantum number) fall one at a time on a Young's double slit apparatus. The separation between the slits is d and the screen is placed at a constant distance from the slits. What factor should d be multiplied by to maintain a constant fringe width for various lines, as n takes different allowed values?

- (a) $\frac{n^2 - 4}{4n^2}$ (b) $\frac{n^2 + 4}{4n^2}$
 (c) $\frac{4n^2}{n^2 - 4}$ (d) $\frac{4n^2}{n^2 + 4}$

55. Under parity and time reversal transformations, which of the following statements is(are) TRUE about the electric dipole moment p and the magnetic dipole moment μ ?

- (a) p is odd under parity and μ is odd under time reversal
 (b) p is odd under parity and μ is even under time reversal
 (c) p is even under parity and μ is odd under

time reversal

(d) p is even under parity and μ is even under time reversal

56. Consider the complex function

$$f(z) = \frac{z^2 \sin z}{(z - \pi)^4}$$

At $z = \pi$, which of the following options is(are) CORRECT?

(a) The order of the pole is 4

(b) The order of the pole is 3

(c) The residue at the pole is $\frac{\pi}{6}$

(d) The residue at the pole is $\frac{2\pi}{3}$

57. Consider the vector field \vec{v} consisting of the velocities of points on a thin horizontal disc of radius $R = 2m$, moving anticlockwise with uniform angular speed $\omega = 2$ rad/sec about an axis passing through its center. If $V = |\vec{v}|$, then which of the following options is(are) CORRECT? (In the options, \hat{r} and $\hat{\theta}$ are unit vectors corresponding to the plane polar coordinates r and θ).

You may use the fact that in cylindrical coordinates (s, ϕ, Z) (s is the distance from the z -axis), the gradient, divergence, curl and Laplacian operators are

$$\vec{\nabla} f = \frac{\partial f}{\partial s} \hat{s} + \frac{1}{s} \frac{\partial f}{\partial \phi} \hat{\phi} + \frac{\partial f}{\partial z} \hat{z}$$

$$\vec{\nabla} \cdot \vec{A} = \frac{1}{s} \frac{\partial}{\partial s} (s A_s) + \frac{1}{s} \frac{\partial A_\phi}{\partial \phi} + \frac{\partial A_z}{\partial z}$$

$$\vec{\nabla} \times \vec{A} = \left(\frac{1}{s} \frac{\partial A_z}{\partial \phi} - \frac{\partial A_\phi}{\partial z} - \frac{\partial A_s}{\partial z} \right) \hat{s} + \left(\frac{\partial A_s}{\partial z} - \frac{\partial A_z}{\partial s} \right) \hat{\phi}$$

$$+ \frac{1}{s} \left(\frac{\partial}{\partial s} (s A_\phi) - \frac{\partial A_s}{\partial \phi} \right) \hat{z}$$

$$\vec{\nabla}^2 f = \frac{1}{s} \frac{\partial}{\partial s} \left(s \frac{\partial f}{\partial s} \right) + \frac{1}{s^2} \frac{\partial^2 f}{\partial \phi^2} + \frac{\partial^2 f}{\partial z^2}$$

$$(a) \vec{\nabla} V = 2\hat{r}$$

$$(b) \vec{\nabla} \cdot \vec{v} = 2$$

(c) $\vec{\nabla} \times \vec{v} = 4\hat{z}$, where \hat{z} is a unit vector perpendicular to the (r, θ) plane

$$(d) \vec{\nabla}^2 V = \frac{4}{3} \text{ at } r = 1.5m$$

58. A slow moving π^- particle is captured by a deuteron (d) and this reaction produces two neutrons (n) in the final state, i.e., $\pi^- + d \rightarrow n + n$. Neutron and deuteron have even intrinsic parities, whereas π^- has odd intrinsic parity. L and S are the orbital and spin angular momenta, respectively of the system of two neutrons. Which of the following statements regarding the final two-neutron state is(are) CORRECT?

(a) It has odd parity (b) $L + S$ is odd

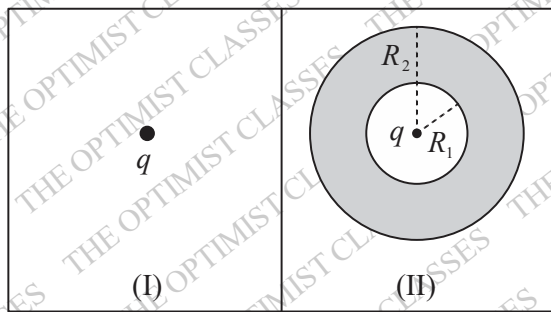
(c) $L = 1, S = 1$ (d) $L = 2, S = 0$

59. Two independent electrostatic configurations are shown in the figure. Configuration (I) consists of an isolated point charge $q = 1C$, and configuration (II) consists of another identical charge surrounded by a thick conducting shell of inner radius $R_1 = 1m$ and outer radius $R_2 = 2m$, with the charge being at the center of the shell.

$$W_I = \frac{\epsilon_0}{2} \int E_I^2 dV \text{ and } W_{II} = \frac{\epsilon_0}{2} \int E_{II}^2 dV, \text{ where}$$

E_I and E_{II} are the magnitude of the electric fields for configurations (I) and (II) respectively, ϵ_0 is the permittivity of vacuum, and the volume integrations are carried out over all space. If

$$\frac{8\pi}{\epsilon_0} |W_I - W_{II}| = \frac{1}{n}, \text{ what is the value of the integer } n?$$



60. In pion nucleon scattering, the pion and nucleon can combine to form a short lived bound state called the Δ particle ($\pi + N \rightarrow \Delta$). The masses of the pion, nucleon and the Δ particle are $140\text{MeV}/c^2$, $938\text{MeV}/c^2$ and $1230\text{MeV}/c^2$, respectively. In the lab frame, where the nucleon is at rest, what is the minimum energy (in MeV/c^2 , rounded off to one decimal place) of the pion to produce the Δ particle?

61. Consider an electromagnetic wave propagating in the z -direction in vacuum, with the magnetic field given by $\vec{B} = \vec{B}_0 e^{i(kz - \omega t)}$. If $B_0 = 10^{-8}\text{T}$, the average power passing through a circle of radius 1.0m placed in the xy -plane is P (in Watts). Using $\epsilon_0 = 10^{-11} \frac{\text{C}^2}{\text{Nm}^2}$, what is the value of $\frac{10^3 P}{\pi}$ (rounded off to one decimal place)?

62. An α -particle is emitted from the decay of Americium (Am) at rest, i.e., ${}_{94}^{241}Am \rightarrow {}_{92}^{237}U + \alpha$. The rest masses of ${}_{94}^{241}Am$, ${}_{92}^{237}U$ and α are $224.544\text{GeV}/c^2$, $220.811\text{GeV}/c^2$ and $3.728\text{GeV}/c^2$ respectively. What is the kinetic energy (in MeV/c^2 , rounded off to two decimal places) of the α -particle?

63. Consider 6 identical, non-interacting, spin $\frac{1}{2}$ atoms arranged on a crystal lattice at absolute temperature T . The z -component of the magnetic moment of each of these atoms can be $\pm\mu_B$. If P and Q are the probabilities of the net magnetic moment of the solid being $2\mu_B$ and $6\mu_B$ respec-

tively, what is the value of $\frac{P}{Q}$ (in integer)?

64. Two identical, non-interacting ${}^4\text{He}_2$ atoms are distributed among 4 different non-degenerate energy levels. The probability that they occupy different energy levels is p . Similarly, two ${}^3\text{He}_2$ atoms are distributed among 4 different non-degenerate energy levels, and the probability that they occupy different levels is q . What is the value of $\frac{p}{q}$ (rounded off to one decimal place)?
65. Two identical bodies kept at temperatures 800K and 200K act as the hot and the cold reservoirs of an ideal heat engine, respectively. Assume that their heat capacity (C) in Joules/ K is independent of temperature and that they do not undergo any phase change. Then, the maximum work that can be obtained from the heat engine is $n \times C$ Joules. What is the value of n (in integer)?

ANSWER KEY

1.	0	2.	0	3.	0
4.	0	5.	0	6.	0
7.	0	8.	0	9.	0
10.	0	11.	0	12.	0
13.	0	14.	0	15.	0
16.	0	17.	0	18.	0
19.	0	20.	0	21.	0
22.	0	23.	0	24.	0
25.	0	26.	0	27.	0
28.	0	29.	0	30.	0
31.	0	32.	0	33.	0
34.	0	35.	0	36.	0
37.	0	38.	0	39.	0
40.	0	41.	0	42.	0
43.	0	44.	0	45.	0
46.	0	47.	0	48.	0
49.	0	50.	0	51.	0
52.	0	53.	0	54.	0
55.	0				