

THE OPTIMIST CLASSES IIT-JAM TOPPERS



MANOJ KUMAR SINGH



ABHAY



PAWAN



SATYAM



SOUMIL GIRISH SAHU



BHOOMIJA



AKSHIT AGGARWAL



SHIKHAR CHAMOLI



RAVI SINGH ADHIKARI



GAURAV JHA



SWAPNIL JOSHI



LOKESH BHATT



GOPESH VISHVAKARMA



VAIBHAV



SHASWAT CHAMOLI

CSIR-NET-JRF RESULTS 2022



ANNU
DL01000308



ALANKAR
UP15000162



SAHIL RANA
HR09000108



JAYESTHI
RJ11000161



DASRATH
RJ06000682



VIVEK
UK01000439



UZAIR AHMED
UP02000246



SURYA PRATAP SINGH
RJ06000232



HIMANSHU
UP10000095



CHANDAN
RJ09000159



SAIKHOM JOHNSON
MN01000196



AJAY SAINI
RJ06001744



VIKAS YADAV
RJ06001102



JYOTSNA KOHLI
UK02000262



SHYAM SUNDAR
RJ06000615

THE OPTIMIST CLASSES

AN INSTITUTE FOR NET-JRF/GATE/IIT-JAM/JEST/TIFR/M.Sc ENTRANCE EXAMS

CONTACT: 9871044043

CSIR-UGC-NET/JRF-JUNE-2013

PREVIOUS YEAR QUESTION

PHYSICAL SCIENCES

Part - B

21. Two identical bosons of mass m are placed in a one-dimensional potential $V(x) = \frac{1}{2}m\omega^2 x^2$. The bosons interact via a weak potential, $V_{12} = V_0 \exp[-m\Omega(x_1 - x_2)^2 / 4\hbar]$ where x_1 and x_2 denote coordinates of the particles. Given that the ground state wavefunction of the harmonic oscillator is $\psi_0(x) = \left(\frac{m\omega}{\pi\hbar}\right)^{1/4} e^{-\frac{m\omega x^2}{2\hbar}}$. The ground state energy of the two-boson system, to the first order in V_0 is:

- (a) $\hbar\omega + 2V_0$ (b) $\hbar\omega + \frac{V_0\Omega}{\omega}$
 (c) $\hbar\omega + V_0 \left(1 + \frac{\Omega}{2\omega}\right)^{-1/2}$ (d) $\hbar\omega + V_0 \left(1 + \frac{\omega}{\Omega}\right)$

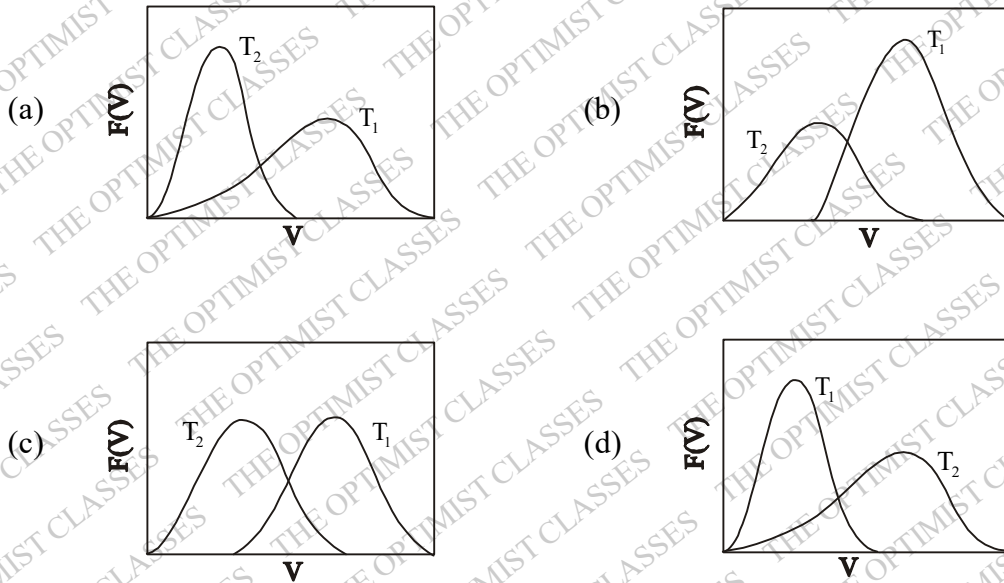
22. Ten grams of ice at 0°C is added to a beaker containing 30 grams of water at 25°C . What is the final temperature of the system when it comes to thermal equilibrium? (The specific heat of water is $1 \text{ cal/gm}^\circ\text{C}$ and latent heat of melting of ice is 80 cal/gm)

- (a) 0°C (b) 7.5°C (c) 12.5°C (d) -1.25°C

23. A vessel has two compartments of volume V_1 and V_2 , containing an ideal gas at pressure p_1 and p_2 , and temperatures T_1 and T_2 respectively. If the wall separating the compartments is removed, the resulting equilibrium temperature will be

- (a) $\frac{p_1 T_1 + p_2 T_2}{p_1 + p_2}$ (b) $\frac{V_1 T_1 + V_2 T_2}{V_1 + V_2}$
 (c) $\frac{p_1 V_1 + p_2 V_2}{(p_1 V_1 / T_1) + (p_2 V_2 / T_2)}$ (d) $(T_1 T_2)^{1/2}$

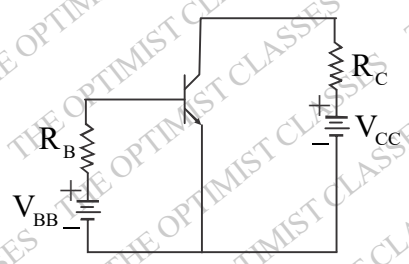
24. For temperature $T_1 > T_2$, the qualitative temperature dependence of the probability distribution $F(v)$ of the speed v of a molecule in three dimension is correctly represented by the following figure:

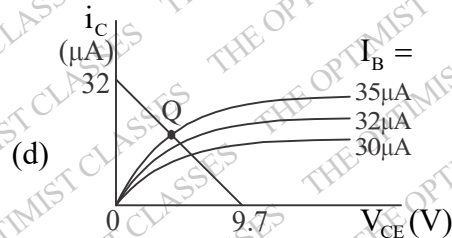
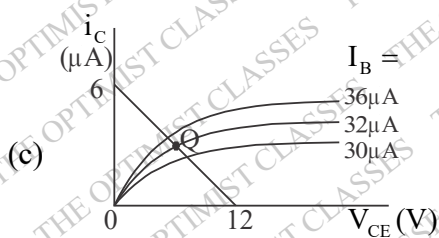


25. A system of non-interacting spin -1/2 charged particles are placed in an external magnetic field. At low temperature T , the leading behaviour of the excess energy above the ground state energy, depends on T as :
 (c is a constant)
 (a) cT (b) cT^3 (c) e^{-cT} (d) c (is independent of T)
26. The acceleration due to gravity g is determined by measuring the time period T and the length L of a simple pendulum. If the uncertainties in the measurements of T and L are ΔT and ΔL respectively, the fractional error $\Delta g / g$ in measuring g is best approximated by

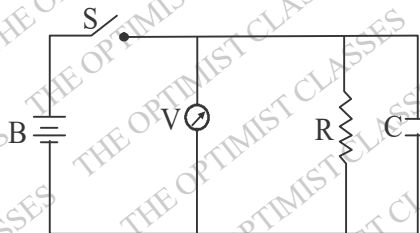
(a) $\frac{|\Delta L|}{L} + \frac{|\Delta T|}{T}$ (b) $\frac{|\Delta L|}{L} + \frac{|2\Delta T|}{T}$ (c) $\Delta T \sqrt{\frac{|\Delta L|^2}{L} + \frac{|\Delta T|^2}{T}}$ (d) $\sqrt{\left(\frac{|\Delta L|}{L}\right)^2 + \left(\frac{|2\Delta T|}{T}\right)^2}$

27. A silicon transistor with built-in voltage $0.7V$ is used in the circuit shown, with $V_{BB} = 9.7V$, $R_B = 300k\Omega$, $V_{CC} = 12V$ and $R_C = 2k\Omega$. Which of the following figures correctly represents the load line and the quiescent Q point ?

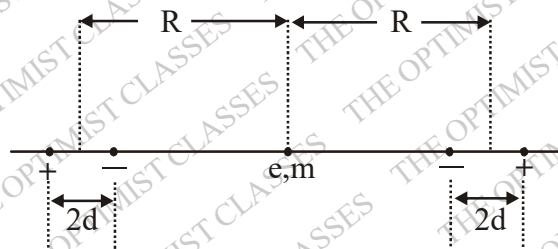




28. If the analog input to an 8-bit successive approximation ADC is increased from 1.0 V to 2.0 V, then the conversion time will
 (a) remain unchanged (b) double
 (c) decrease to half its original value (d) increase four times
29. The insulation resistance R of an insulated cable is measured by connecting it in parallel with a capacitor C , a voltmeter, and battery B as shown. The voltage across the cable dropped from 150V to 15V, 1000 seconds after the switch S is closed. If the capacitance of the cable is $5 \mu\text{F}$ then its insulation resistance is approximately



- (a) $10^9 \Omega$ (b) $10^8 \Omega$ (c) $10^7 \Omega$ (d) $10^6 \Omega$
30. The approximation $\cos \theta \approx 1$ is valid up to 3 decimal places as long as $|\theta|$ is less than : (take $180^\circ = \pi = 57.29^\circ$).
 (a) 1.28° (b) 1.81° (c) 3.28° (d) 4.01°
31. The area of a disc in its rest frame S is equal to 1 (in some units). The disc will appear distorted to an observe O moving with a speed u with respect to S along the plane of the disc. The area of the disc measured in the rest frame of the observer O is (c is the speed of light in vacuum)
 (a) $\left(1 - \frac{u^2}{c^2}\right)^{1/2}$ (b) $\left(1 - \frac{u^2}{c^2}\right)^{-1/2}$ (c) $\left(1 - \frac{u^2}{c^2}\right)$ (d) $\left(1 - \frac{u^2}{c^2}\right)^{-1}$
32. A particle of charge e and mass m is located at the midpoint of the line joining two mixed collinear dipoles with unit charges as shown in the figure. (The particle is constrained to move only along the line joining the dipoles). Assuming that the length of the dipoles is much shorter than their separation, the natural frequency of oscillation of the particle is



$$(a) \sqrt{\frac{6e^2 R^2}{\pi \epsilon_0 m d^5}} \quad (b) \sqrt{\frac{6e^2 R}{\pi \epsilon_0 m d^4}} \quad (c) \sqrt{\frac{6e^2 d^2}{\pi \epsilon_0 m R^5}} \quad (d) \sqrt{\frac{6e^2 d}{\pi \epsilon_0 m R^4}}$$

33. A current I is created by a narrow beam of protons moving in vacuum with constant velocity \vec{u} . The direction and magnitude, respectively, of the Poynting vector \vec{S} outside the beam at a radial distance r (much larger than the width of the beam) from the axis, are

$$(a) \vec{S} \perp \vec{u} \text{ and } |\vec{S}| = \frac{I^2}{4\pi^2 \epsilon_0 |\vec{u}| r^2} \quad (b) \vec{S} \parallel (-\vec{u}) \text{ and } |\vec{S}| = \frac{I^2}{4\pi^2 \epsilon_0 |\vec{u}| r^4}$$

$$(c) \vec{S} \parallel \vec{u} \text{ and } |\vec{S}| = \frac{I^2}{4\pi^2 \epsilon_0 |\vec{u}| r^2} \quad (d) \vec{S} \parallel \vec{u} \text{ and } |\vec{S}| = \frac{I^2}{4\pi^2 \epsilon_0 |\vec{u}| r^4}$$

34. If the electric and magnetic fields are unchanged when the vector potential \vec{A} changes (in suitable units) according to $\vec{A} \rightarrow \vec{A} + \hat{r}$, where $\vec{r} = r(t)\hat{r}$, then the scalar potential Φ must simultaneously change to

$$(a) \Phi - r \quad (b) \Phi + r \quad (c) \Phi - \partial r / \partial t \quad (d) \Phi + \partial r / \partial t$$

35. Consider an axially symmetric static charge distribution of the form, $\rho = \rho_0 \left(\frac{r_0}{r}\right)^2 e^{-r/r_0} \cos^2 \phi$. The radial component of the dipole moment due to this charge distribution is

$$(a) 2\pi\rho_0 r_0^4 \quad (b) \pi\rho_0 r_0^4 \quad (c) \rho_0 r_0^4 \quad (d) \pi\rho_0 r_0^4 / 2$$

36. In a basis in which the z-component S_z of the spin is diagonal, an electron is in a spin state

$$\psi = \begin{pmatrix} (1+i) \sqrt{6} \\ \sqrt{2/3} \end{pmatrix}$$

The probability that a measurement of S_z will yield the values $\hbar/2$ and $-\hbar/2$ are, respectively.

$$(a) 1/2 \text{ and } 1/2 \quad (b) 2/3 \text{ and } 1/3 \quad (c) 1/4 \text{ and } 3/4 \quad (d) 1/3 \text{ and } 2/3$$

37. Consider the normalized state $|\psi\rangle$ of a particle in a one-dimensional harmonic oscillator:

$|\psi\rangle = b_1|0\rangle + b_2|1\rangle$ where $|0\rangle$ and $|1\rangle$ denote the ground the first excited states respectively, and b_1 and b_2 are real constants. The expectation value of the displacement x in the state $|\psi\rangle$ will be a minimum when

$$(a) b_2 = 0, (b_1 = 1) \quad (b) b_2 = \frac{1}{\sqrt{2}} b_1 \quad (c) b_2 = \frac{1}{2} b_1 \quad (d) b_2 = b_1$$

38. A muon (μ^-) from cosmic rays is trapped by a proton to form a hydrogen-like atom. Given that a muon is approximately 200 times heavier than an electron, the longest wavelength of the spectral line (in the analogue of the Lyman series) of such an atom will be

$$(a) 5.62 \text{ \AA} \quad (b) 6.67 \text{ \AA} \quad (c) 3.75 \text{ \AA} \quad (d) 13.3 \text{ \AA}$$

39. The un-normalized wavefunction of a particle in a spherically symmetric potential is given by

$\psi(\vec{r}) = z f(r)$ where $f(r)$ is a function of the radial variable r . The eigenvalue of the operator \vec{L}^2 (namely the square of the orbital angular momentum) is

$$(a) \hbar^2 / 4 \quad (b) \hbar^2 / 2 \quad (c) \hbar^2 \quad (d) 2\hbar^2$$

40. Given that $\sum_{n=0}^{\infty} H_n(x) \frac{t^n}{n!} = e^{-t^2+2tx}$ the value of $H_4(0)$ is
 (a) 12 (b) 6 (c) 24 (d) -6
41. A unit vector \hat{n} on the xy-plane is at an angle of 120° with respect to \hat{i} . The angle between the vectors $\vec{u} = a\hat{i} + b\hat{n}$ and $\vec{v} = a\hat{n} + b\hat{i}$ will be 60° if
 (a) $b = \sqrt{3}a/2$ (b) $b = 2a/\sqrt{3}$ (c) $b = a/2$ (d) $b = a$
42. With $z = x + iy$, which of the following functions $f(x, y)$ is NOT a (complex) analytic function of z ?
 (a) $f(x, y) = (x+iy-8)^3$ (b) $f(x, y) = (x+iy)^7(1-x-iy)^3$
 $(4+x^2-y^2+2ixy)^7$
 (c) $f(x, y) = (x^2-y^2+2ixy-3)^5$ (d) $f(x, y) = (1-x+iy)^4(2+x+iy)^6$
43. A planet of mass m and an angular momentum L moves in a circular orbit in a potential, $V(r) = -k/r$, where k is a constant. If it is slightly perturbed radially, the angular frequency of radial oscillations is
 (a) $mk^2/\sqrt{2}L^3$ (b) mk^2/L^3 (c) $\sqrt{2}mk^2/L^3$ (d) $\sqrt{3}mk^2/L^3$
44. The Lagrangian of a particle of mass m moving in one dimensions is given by

$$L = \frac{1}{2}mx^2 - bx$$

where b is a positive constant. The coordinate of the particle $x(t)$ at time t is given by: (in the following c_1 and c_2 are constants)

- (a) $-\frac{b}{2m}t^2 + c_1t + c_2$ (b) $c_1t + c_2$
 (c) $c_1 \cos\left(\frac{bt}{m}\right) + c_2 \sin\left(\frac{bt}{m}\right)$ (d) $c_1 \cosh\left(\frac{bt}{m}\right) + c_2 \sinh\left(\frac{bt}{m}\right)$
45. A uniform cylinder of radius r and length ℓ , and a uniform sphere of radius R are released on an inclined plane when their centres of mass are at the same height. If they roll down without slipping, and if the sphere reaches the bottom of the plane with a speed V , then the speed of the cylinder when it reaches the bottom is:
 (a) $V\sqrt{\frac{14r\ell}{15R^2}}$ (b) $4V\sqrt{\frac{r}{15R}}$ (c) $\frac{4V}{\sqrt{15}}$ (d) $V\sqrt{\frac{14}{15}}$

Part -C

46. The components of a vector potential $A_\mu \equiv (A_0, A_1, A_2, A_3)$ are given by
 $A_\mu = k(-xyz, yzt, zxt, xyt)$ where k is a constant. The three components of the electric field are
 (a) $k(yz, zx, xy)$ (b) $k(x, y, z)$ (c) $(0, 0, 0)$ (d) $k(xt, yt, zt)$
47. In the Born approximation, the scattering amplitude $f(\theta)$ for the Yukawa potential $V(r) = \frac{\beta e^{-\mu r}}{r}$ is given by: (in the following $b = 2k \sin \frac{\theta}{2}$, $E = \hbar^2 k^2/2m$)

$$(a) \frac{2m\beta}{\hbar^2(\mu^2 + b^2)^2} \quad (b) \frac{2m\beta}{\hbar^2(\mu^2 + b^2)} \quad (c) \frac{2m\beta}{\hbar^2\sqrt{\mu^2 + b^2}} \quad (d) \frac{2m\beta}{\hbar^2(\mu^2 + b^2)^3}$$

48. If $\psi_{n,l,m}$ denotes the eigenfunction of the Hamiltonian with a potential $V = V(r)$ then the expectation

value of the operator $L_x^2 + L_y^2$ in the state $\psi = \frac{1}{5} [3\psi_{211} + \psi_{210} - \sqrt{15}\psi_{21-1}]$ is

$$(a) 39\hbar^2/25 \quad (b) 13\hbar^2/25 \quad (c) 2\hbar^2 \quad (d) 26\hbar^2/25$$

49. An oscillating current $I(t) = I_0 \exp(-i\omega t)$ flows in the direction of the y-axis through a thin metal sheet of area 1.0 cm^2 kept in the xy-plane. The rate of total energy radiated per unit area from the surfaces of the metal sheet at a distance of 100m is

$$(a) I_0 \omega / (12\pi\epsilon_0 c^3) \quad (b) I_0^2 \omega^2 / (12\pi\epsilon_0 c^3) \\ (c) I_0^2 \omega / (12\pi\epsilon_0 c^3) \quad (d) I_0 \omega^2 / (24\pi\epsilon_0 c^3)$$

50. Consider a two-dimensional infinite square well $V(x, y) = \begin{cases} 0 & 0 < x < a, 0 < y < a \\ \infty & \text{otherwise} \end{cases}$. Its normalized

eigenfunction are $\psi_{n_x, n_y}(x, y) = \frac{2}{a} \sin\left(\frac{n_x \pi x}{a}\right) \sin\left(\frac{n_y \pi y}{a}\right)$, where $n_x, n_y = 1, 2, 3, \dots$. If a perturba-

tion $H' = \begin{cases} V_0 & 0 < x < \frac{a}{2}, 0 < y < \frac{a}{2} \\ 0 & \text{otherwise} \end{cases}$ is applied, then the correction to the energy of the first excited state to order V_0 is

$$(a) \frac{V_0}{4} \quad (b) \frac{V_0}{4} \left[1 \pm \frac{64}{9\pi^2}\right] \quad (c) \frac{V_0}{4} \left[1 \pm \frac{16}{9\pi^2}\right] \quad (d) \frac{V_0}{4} \left[1 \pm \frac{32}{9\pi^2}\right]$$

51. Consider a system of two Ising spins S_1 and S_2 taking value ± 1 with interaction energy given by $\epsilon = -JS_1 S_2$, when it is in thermal equilibrium at temperature T. For large T, the average energy of the system varies as $C/k_B T$, with C given by

$$(a) -2J^2 \quad (b) -J^2 \quad (c) J^2 \quad (d) 4J$$

52. Consider three particles A, B and C, each with an attribute S that can take two value ± 1 . Let $S_A = 1, S_B = 1$ and $S_C = -1$ at a given instant. In the next instant, each S value can change to $-S$ with probability $1/3$. The probability that $S_A + S_B + S_C$ remains unchanged is

$$(a) 2/3 \quad (b) 1/3 \quad (c) 2/9 \quad (d) 4/9$$

53. The bound on the ground state energy of the Hamiltonian with an attractive delta-function potential, namely

$$H = \frac{\hbar^2}{2m} \frac{d^2}{dx^2} - \delta(x)$$

using the variational principle with the trial wavefunction $\psi(x) = A \exp(-bx^2)$ is

$$\left[\text{Note: } \int_0^{\infty} e^{-t} t^a dt = \Gamma(a+1) \right]$$

54. (a) $-m\alpha^2 / 4\pi\hbar^2$ (b) $-m\alpha^2 / 2\pi\hbar^2$ (c) $-m\alpha^2 / \pi\hbar^2$ (d) $-m\alpha^2 / \sqrt{5}\pi\hbar^2$
- Consider two different systems each with three identical non-interacting particles. Both have single particles states with energies $\varepsilon_0, 3\varepsilon_0$ and $5\varepsilon_0$, ($\varepsilon_0 > 0$). One system is populated by spin $-\frac{1}{2}$ fermions and the other by bosons. What is the value of $E_F - E_B$ where E_F and E_B are the ground state energies of the fermionic and bosonic systems respectively?

- (a) $6\varepsilon_0$ (b) $2\varepsilon_0$ (c) $4\varepsilon_0$ (d) ε_0

55. The input to a lock-in amplifier has the form $V_i(t) = V_i \sin(\omega t + \theta_i)$ where V_i, ω, θ_i are the amplitude, frequency and phase of the input signal respectively. This signal is multiplied by a reference signal of the same frequency ω , amplitude V_r and phase θ_r . If the multiplied signal is fed to a low pass filter of cut-off frequency ω , then the final output signal is

- (a) $\frac{1}{2} V_i V_r \cos(\theta_i - \theta_r)$ (b) $V_i V_r \left[\cos(\theta_i - \theta_r) - \cos\left(\frac{1}{2}\omega t + \theta_i + \theta_r\right) \right]$
- (c) $V_i V_r \sin(\theta_i - \theta_r)$ (d) $V_i V_r \left[\cos(\theta_i - \theta_r) + \cos\left(\frac{1}{2}\omega t + \theta_i + \theta_r\right) \right]$

56. The solution of the partial differential equation

$$\frac{\partial^2}{\partial t^2} u(x, t) - \frac{\partial^2}{\partial x^2} u(x, t) = 0$$

satisfying the boundary conditions $u(0, t) = u(L, t)$ and initial conditions $u(x, 0) = \sin(\pi x/L)$ and

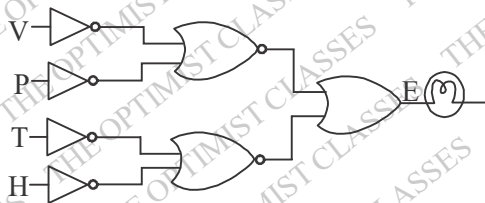
$$\left. \frac{\partial}{\partial t} u(x, t) \right|_{t=0} = \sin(2\pi x/L) \text{ is}$$

- (a) $\sin(\pi x/L) \cos(\pi t/L) + \frac{L}{2\pi} \sin(2\pi x/L) \cos(2\pi t/L)$
- (b) $2 \sin(\pi x/L) \cos(\pi t/L) - \sin(\pi x/L) \cos(2\pi t/L)$
- (c) $\sin(\pi x/L) \cos(2\pi t/L) + \frac{L}{\pi} \sin(2\pi x/L) \sin(\pi t/L)$
- (d) $\sin(\pi x/L) \cos(\pi t/L) + \frac{L}{2\pi} \sin(2\pi x/L) \sin(2\pi t/L)$

57. Consider the hydrogen deuterium molecule HD. If the mean distance between the two atoms is 0.08 nm and the mass of the hydrogen atom is $938 \text{ MeV}/c^2$, then the energy difference ΔE between the two lowest rotational states is approximately

- (a) 10^{-1} eV (b) 10^{-2} eV (c) $2 \times 10^{-2} \text{ eV}$ (d) 10^{-3} eV

58. Four digital outputs V, P, T and H monitor the speed v, tyre pressure P, temperature t and relative humidity h of a car. These outputs switch from 0 to 1 when the values of the parameters exceed 85 km/hr, 2 bar, 40°C and 50%, respectively. A logic circuit that is used to switch ON a lamp at the output E is shown below.



Which of the following conditions will switch the lamp ON?

- (a) $v < 85 \text{ km/hr}$, $p < 2 \text{ bar}$, $t > 40^\circ \text{C}$, $h > 50\%$
 (b) $v < 85 \text{ km/hr}$, $p < 2 \text{ bar}$, $t > 40^\circ \text{C}$, $h < 50\%$
 (c) $v > 85 \text{ km/hr}$, $p < 2 \text{ bar}$, $t > 40^\circ \text{C}$, $h < 50\%$
 (d) $v > 85 \text{ km/hr}$, $p < 2 \text{ bar}$, $t < 40^\circ \text{C}$, $h > 50\%$

59. The solution of the differential equation $\frac{dx}{dt} = x^2$ with the initial condition $x(0) = 1$ will blow up as t tends to

- (a) 1 (b) 2 (c) 1/2 (d) ∞
 60. Let u be a random variable uniformly distributed in the interval $[0, 1]$ and $V = -c \ln u$, where c is a real constant. If V is to be exponentially distributed in the interval $[0, \infty)$ with unit standard deviation, then the value of c should be
 (a) $\ln 2$ (b) 1/2 (c) 1 (d) -1

61. The inverse Laplace transform of $\frac{1}{s^2(s+1)}$ is

- (a) $\frac{1}{2} t^2 e^{-t}$ (b) $\frac{1}{2} t^2 + 1 - e^{-t}$ (c) $t - 1 + e^{-t}$ (d) $\frac{1}{2} t^2 (1 - e^{-t})$

62. The number of degrees of freedom of a rigid body in d space-dimensions is

- (a) $2d$ (b) 6 (c) $d(d+1)/2$ (d) $d!$

63. A particle of mass m is at the stable equilibrium position of its potential energy $V(x) = ax - bx^3$ where a, b are positive constants. The minimum velocity that has to be imparted to the particle to render its motion unstable is

- (a) $(64a^3/9m^2b)^{1/4}$ (b) $(64a^3/27m^2b)^{1/4}$ (c) $(16a^3/27m^2b)^{1/4}$ (d) $(3a^3/64m^2b)^{1/4}$

64. If the operators A and B satisfy the commutation relation $[A, B] = I$, where I is the identity operator, then

- (a) $[e^A, B] = e^A$ (b) $[e^A, B] = [e^B, A]$ (c) $[e^A, B] = [e^{-B}, A]$ (d) $[e^A, B] = I$

65. A system is governed by the Hamiltonian $H = \frac{1}{2}(p_x - ay)^2 + \frac{1}{2}(p_y - bx)^2$

where a and b are constants and p_x, p_y are momenta conjugate to x and y respectively. For what values of a and b will be quantities $(p_x - 3y)$ and $(p_y - 2x)$ be conserved?

- (a) $a = -3, b = 2$ (b) $a = 3, b = -2$ (c) $a = 2, b = -3$ (d) $a = -2, b = 3$

66. Using the frequency-dependent Drude formula, what is the effective kinetic inductance of a metallic wire that is to be used as a transmission line? [In the following, the electron mass is m , density of

electrons is n , and the length and cross-sectional area of the wire are ℓ and A respectively]

- (a) $mA/(ne^2 \ell)$ (b) zero (c) $m \ell / (ne^2 A)$ (d) $m\sqrt{A} / (ne^2 \ell^2)$

67. The phonon dispersion for the following one-dimensional diatomic lattice with masses M_1 and M_2 (as shown in the figure)



is given by

$$\omega^2(q) = K \left(\frac{1}{M_1} + \frac{1}{M_2} \right) \left[1 \pm \sqrt{1 - \frac{4M_1M_2}{(M_1+M_2)^2} \sin^2\left(\frac{qa}{2}\right)} \right]$$

where a is the lattice parameter and K is spring constant. The velocity of sound is

- (a) $\sqrt{\frac{K(M_1+M_2)}{2M_1M_2}} a$ (b) $\sqrt{\frac{K}{2(M_1+M_2)}} a$ (c) $\sqrt{\frac{K(M_1+M_2)}{M_1M_2}} a$ (d) $\sqrt{\frac{KM_1M_2}{2(M_1+M_2)^3}} a$

68. The binding energy of a light nucleus (Z, A) in MeV is given by the approximate formula

$$B(A, Z) \approx 16A - 20A^{2/3} - \frac{3}{4}Z^2A^{-1/3} + 30\frac{(N-Z)^2}{A}$$

where $N = A - Z$ is the neutron number. The value of Z of the most stable isobar for a given A is

- (a) $\frac{A}{2} \left(1 - \frac{A^{2/3}}{160} \right)^{-1}$ (b) $\frac{A}{2}$ (c) $\frac{A}{2} \left(1 - \frac{A^{2/3}}{120} \right)^{-1}$ (d) $\frac{A}{2} \left(1 + \frac{A^{4/3}}{64} \right)$

69. Muons are produced through the annihilation of particle a and its antiparticle, namely the process $a + \bar{a} \rightarrow \mu^+ + \mu^-$. A muon has a rest mass of $105 \text{ MeV}/c^2$ and its proper life time is $2\mu\text{s}$. If the center of mass energy of the collision is 2.1 GeV in the laboratory frame that coincides with the center-of-mass frame, then the fraction of muons that will decay before they reach a detector placed 6km away from the interaction point is

- (a) e^{-1} (b) $1 - e^{-1}$ (c) $1 - e^{-2}$ (d) e^{-10}

70. The conductors in a 0.75 km long two-wire transmission line are separated by a centre-to-centre distance of 0.2m . If each conductor has a diameter of 4cm , then the capacitance of the line is

- (a) $8.85 \mu\text{F}$ (b) 88.5 nF (c) 8.85 pF (d) 8.85 nF

71. The electron dispersion relation for a one-dimensional metal is given by

$$\epsilon_k = 2\epsilon_0 \left[\sin^2 \frac{ka}{2} - \frac{1}{6} \sin^2 ka \right]$$

where k is the momentum, a is the lattice constant, ϵ_0 is a constant having dimensions of energy and

$|ka| \leq \pi$. If the average number of electrons per atom in the conduction band is $1/3$, then the Fermi energy is

- (a) $\epsilon_0 / 4$ (b) ϵ_0 (c) $2\epsilon_0 / 3$ (d) $5\epsilon_0 / 3$

72. The electronic energy levels in a hydrogen atom are given by $E_n = -13.6/n^2 \text{ eV}$. If a selective excitation to the $n = 100$ level is to be made using a laser, the maximum allowed frequency line-width of the laser is

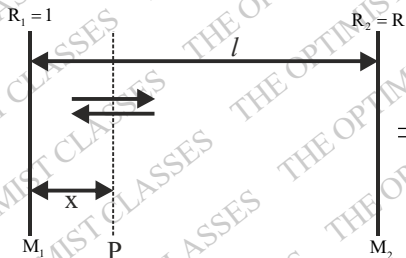
- (a) 6.5 MHz (b) 6.5 GHz (c) 6.5 Hz (d) 6.5 kHz

73. If the energy dispersion of a two-dimensional electron system is $E = u \hbar k$ where u is the velocity and k is the momentum, then the density of states $D(E)$ depends on the energy as

- (a) $1/\sqrt{E}$ (b) \sqrt{E} (c) E (d) constant

74. Consider the laser resonator cavity shown in the figure.

If I_1 is the intensity of the radiation at mirror M_1 and α is the gain coefficient of the medium between the mirrors, then the energy density of photons in the plane P at a distance x from M_1 between the mirrors, then the energy density of photons in the plane P at a distance x from M_1 is



- (a) $(I_1/c)e^{-\alpha x}$ (b) $(I_1/c)e^{\alpha x}$
 (c) $(I_1/c)(e^{\alpha x} + e^{-\alpha x})$ (d) $(I_1/c)e^{2\alpha x}$

75. A spin $-1/2$ particle A undergoes the decay $A \rightarrow B + C + D$ where it is known that B and C are also spin $-1/2$ particles. The complete set of allowed values of the spin of the particle D is

- (a) $\frac{1}{2}, 1, \frac{3}{2}, 2, \frac{5}{2}, 3, \dots$ (b) $0, 1$ (c) $\frac{1}{2}$ only (d) $\frac{1}{2}, \frac{3}{2}, \frac{5}{2}, \frac{7}{2}, \dots$

ANSWER KEY

- | | | | | | | |
|---------|---------|---------|---------|---------|---------|---------|
| 21. (c) | 22. (a) | 23. (c) | 24. (a) | 25. (*) | 26. (d) | 27. (c) |
| 28. (a) | 29. (b) | 30. (b) | 31. (a) | 32. (d) | 33. (c) | 34. (c) |
| 35. (a) | 36. (d) | 37. (a) | 38. (b) | 39. (d) | 40. (a) | 41. (c) |
| 42. (d) | 43. (b) | 44. (a) | 45. (d) | 46. (c) | 47. (b) | 48. (d) |
| 49. (b) | 50. (b) | 51. (b) | 52. (d) | 53. (c) | 54. (b) | 55. (a) |
| 56. (d) | 57. (b) | 58. (a) | 59. (a) | 60. (c) | 61. (c) | 62. (c) |
| 63. (b) | 64. (a) | 65. (d) | 66. (c) | 67. (b) | 68. (a) | 69. (b) |
| 70. (b) | 71. (*) | 72. (b) | 73. (c) | 74. (c) | 75. (c) | |